



BRIEFING 2025





ONLINE RACE FOLLOWING

Download APP ELITECHIP

- CHECK YOUR BIB NUMBER
- CHECK YOUR RESULTS
- RACE TRACKING
- SHARE YOUR RACE EXPERIENCE
- CHECK RACE CALENDAR
- REGISTRATION PLATFORM





PROGRAMA

THURSDAY JANUARY 30 AND FRIDAY JANUARY 31

Collection of Bib numbers for the athletes that asked for it at the registration process:

- [Polideportivo Municipal de San Luis](#) From 8:00 to 14:00 and from 15:30 to 23:00
- [Polideportivo Municipal de Mercadal](#) From 8:00 to 13:00 and from 16:00 to 22:00
- [Piscina Municipal de Ciutadella](#) From 7:00 a.m. to 2:30 p.m. and from 3:30 p.m. to 10:00 p.m.
- [Polideportivo Municipal de Alaior](#) From 7:00 a.m. to 12:00 and from 4:30 p.m. to 9:30 p.m.
- [Bio Sport maritimo de Mahón](#) From 8:00 a.m. to 1:00 p.m. and from 4:00 p.m. to 9:00
- [Polideportivo Municipal de es Migjorn Gran](#) From 8:30 a.m. to 12:30 p.m. and 3:30 p.m. to 10:00 p.m.





PROGRAMA

SATURDAY 1 FEBRUARY 2025

- Collection of race numbers in [Piscina Municipal de Ciutadella](#) from 4:00pm to 08:00pm.

SUNDAY 2 FEBRUARY 2025

- 6:45 am: Departure of the bus from the Poliesportiu Municipal de Ciutadella to the start of the Marathon (*).
 - 7:00 am: Departure of the bus from the Mercadal Tennis Courts to the start of the Marathon (*).
 - 8:00 am : Start of the Trail dels Fars Marathon from the Far de Cavalleria.
 - 9.30 am: Departure of the bus from Poliesportiu Municipal de Ciutadella to the start of the half marathon (*).
 - 10:30 am: Start of the half marathon from the parking of Algaiarens (La Vall).
 - 11.15 Hours: Departure of the bus from the Poliesportiu Municipal de Ciutadella to the start of the popular race in the camí de Son Morell (*).
 - 12:00 Hours: Start of the cursa Popular in the camí de Son Morell.
-
- * The bus is included in the registration fee, at the start of the Far de Cavalleria, will only be accessible with vehicles of the organization.



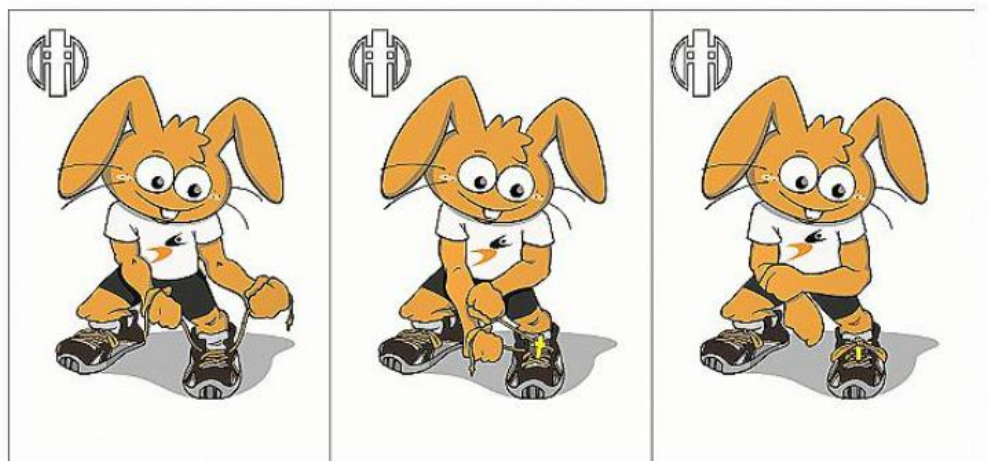
COLLECTION OF RACE NUMBERS

- It is obligatory to present the Federative license (trail and route) if you chose that you are federated.

CHIP PLACEMENT

For a correct reading of the chip, it must be placed on the laces of the shoes, or on the ankle by means of a Velcro or similar. Its optimal reading range is at a distance of less than 50 cm in height on the reading mats.

*All participants who do not have a yellow chip will have to rent one.





OBLIGATORY MATERIAL

ATTENTION!

- Hydration system with a minimum capacity of 0.50L (cups will not be provided at the refreshment stations).
- Cell phone with credit and battery
- Each participant must carry marked gels and bars with their bib number.
- Thermal blanket.
- Race number and chip.
- If poles are used in the race, they must be rubber-tipped and must have spare tips.
- The organization will communicate, if it deems it appropriate, the following material as mandatory:
 - Thermal blanket
 - Windbreaker or waterproof jacket.
- **Before the start of the race there will be a control of mandatory material.



START 12K

- The starting area will be located at Camí de [Son Morell](#). *It can only be accessed with the organization's bus.*
- 11:15h Departure of the bus from the Municipal Swimming Pool of Ciutadella to the start of the Cursa Popular at Camí de Son Morell. It is MANDATORY to use this service to access the starting point of the race.
- Start time. Sunday, February 2 , 12:00h Participants must be in the assigned place 15 minutes before the start of the race.
- Before the start there will be a random material control.
- The checkroom service will be located in the vicinity of the starting area. Bag collection at the finish line.





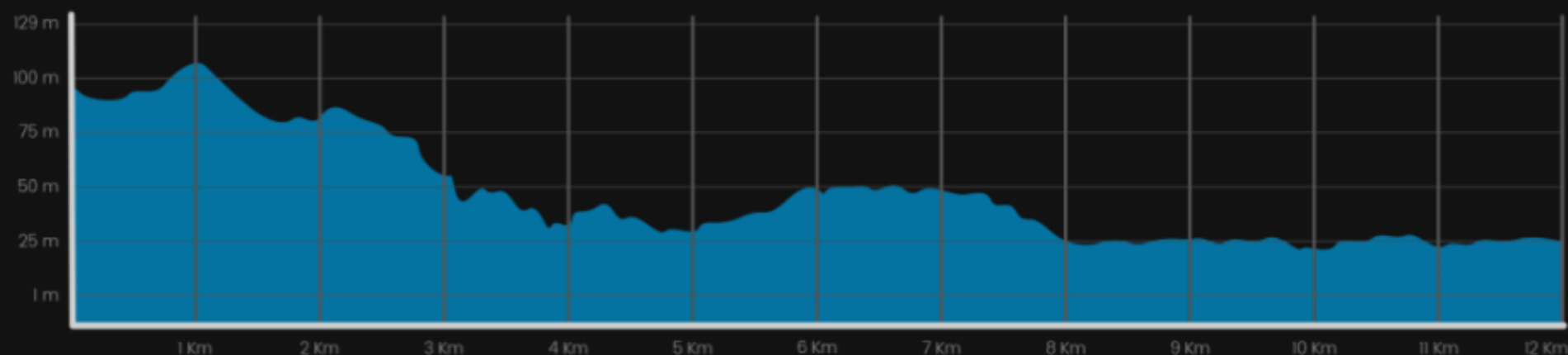
MARATHON  MENORCA
TRAIL DELS FARS
www.illadelstrails.com

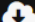



TRAIL DELS FARS 12 KM – 130m D+

Diumenge 2 de febrer 2025 a les 12:00 hores

Sortida de la Cursa Popular – 12KM desde Son Morell.



 [Descargar formato KMZ](#)

 [Descargar formato GPX](#)





START 21K

- The starting area will be located inside the [Parking de La Vall](#). It can only be accessed with the organization's bus.
- Starting time. Sunday, February 2 , 10:30h Participants must be in the assigned place 15 min before the start of the race.
- 9:30h Departure of the bus from the Piscina Municipal de Ciutadella to the start of the Half Marathon. It is **MANDATORY** to use this service to access the starting point of the race.
- Before the start there will be a random material control.
- The checkroom service will be located near the starting area. Bag collection at the finish line.





MARATHON  MENORCA
TRAIL DELS FARS
www.illadelstrails.com

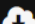


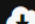
TRAIL DELS FARS 21 KM – 400m D+

Diumenge 2 de febrer 2025 a les 10:30 hores

Inici de la Mitja Marató – 21KM. Al parking de La Vall, en Ciutadella.



 [Descargar formato KMZ](#)

 [Descargar formato GPX](#)





START 46K

- The starting area will be located inside the [Far de Cavalleria](#). It can only be accessed with the organization's bus.
- Departure time: Sunday, February 2th. 8:00h. Participants must be in the assigned place 15 minutes before the start of the race.
- 06:45h Departure of the bus from the Piscina Municipal de Ciutadella to the start of the Marathon. It is MANDATORY to use this service to access the starting point of the race.
- 07:00h Departure of the bus from the tennis courts des Mercadal to the start of the Marathon. It is MANDATORY to use this service to access the starting point of the race.
- Before the start there will be a random material control.
- The checkroom service will be located in the vicinity of the starting area. Bag collection at the finish line.





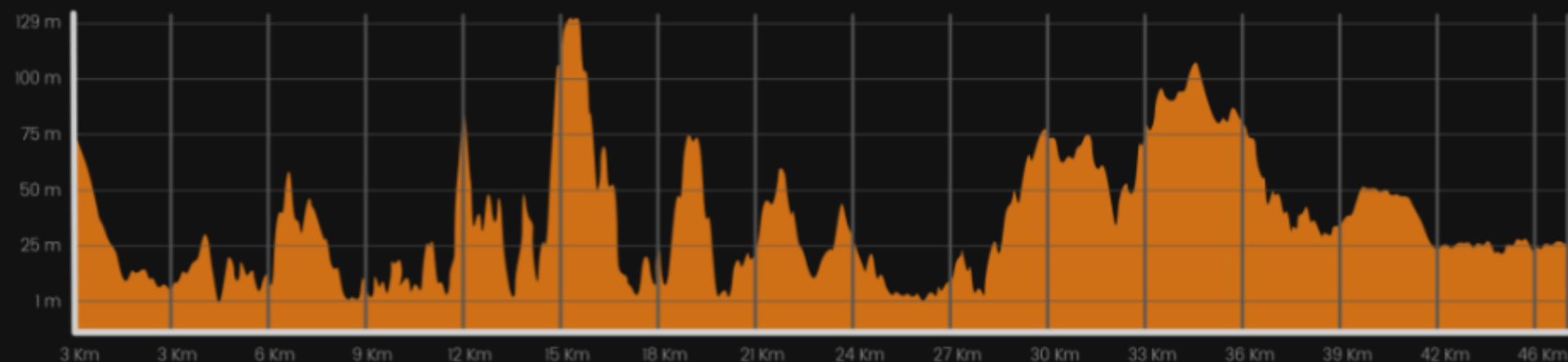
MARATHON  MENORCA
TRAIL DELS FARS
www.illadelstrails.com





TRAIL DELS FARS 46 KM – 1.180m D+

Diumenge 2 de febrer 2025 a les 8:00 hores

Inici de la Trail dels Fars – 46KM. Al Far de Cavalleria.



 [Descargar formato KMZ](#)

 [Descargar formato GPX](#)





You can check the rules through this link: <https://illadelstrails.com/ca/reglamento-trail-dels-fars/>

CUT OFF TIMES AND REFRESHMENT POINTS

The time limit to finish the Trail dels Fars will be 7 hours. The rest of the races will be subject to the cut-off time of the Marathon. Any participant who exceeds the cut-off time in any control will be withdrawn. In case of wanting to continue in the race, he/she will have to hand in the bib and continue under his/her own responsibility.

Cut-off times for the Trail dels Fars (the rest of the races will be subject to these cut-off times):

Refreshment point 1 Binimel-là (6.8 km from Far Cavalleria): 1 hour.

Refreshment point 2 Al-locs (15.7 km from Far Cavalleria): 2 hours 30 minutes.

Refreshment point 3 La Vall (25 km from Far Cavalleria): 4 hours.

Refreshment point 4 Son Morell (30 km from Far Cavalleria): 5 hours.

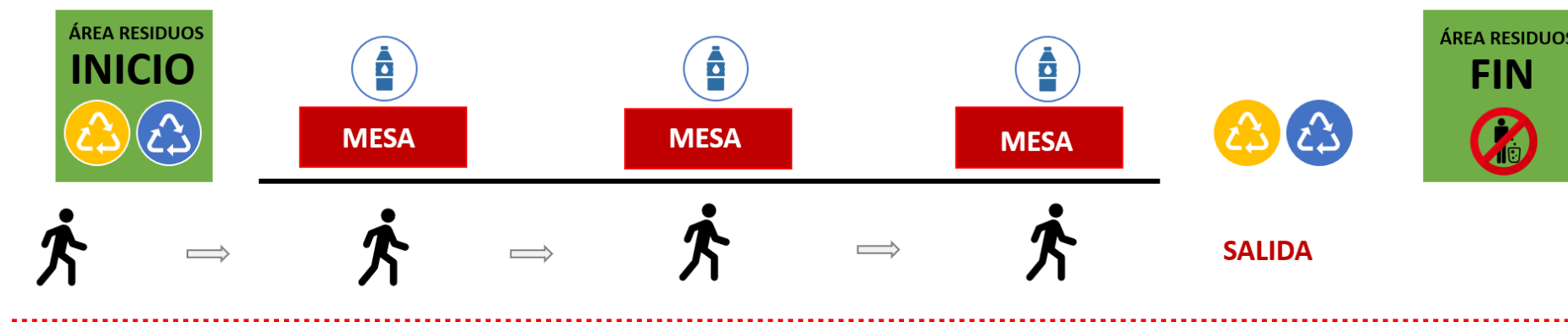
Refreshment point 5 Far Nati (38.3 km from Far Cavalleria): 6 hours.

FINISH LINE Piscina Municipal de Ciutadella (46km from Far de Callaveria): 7 hours.



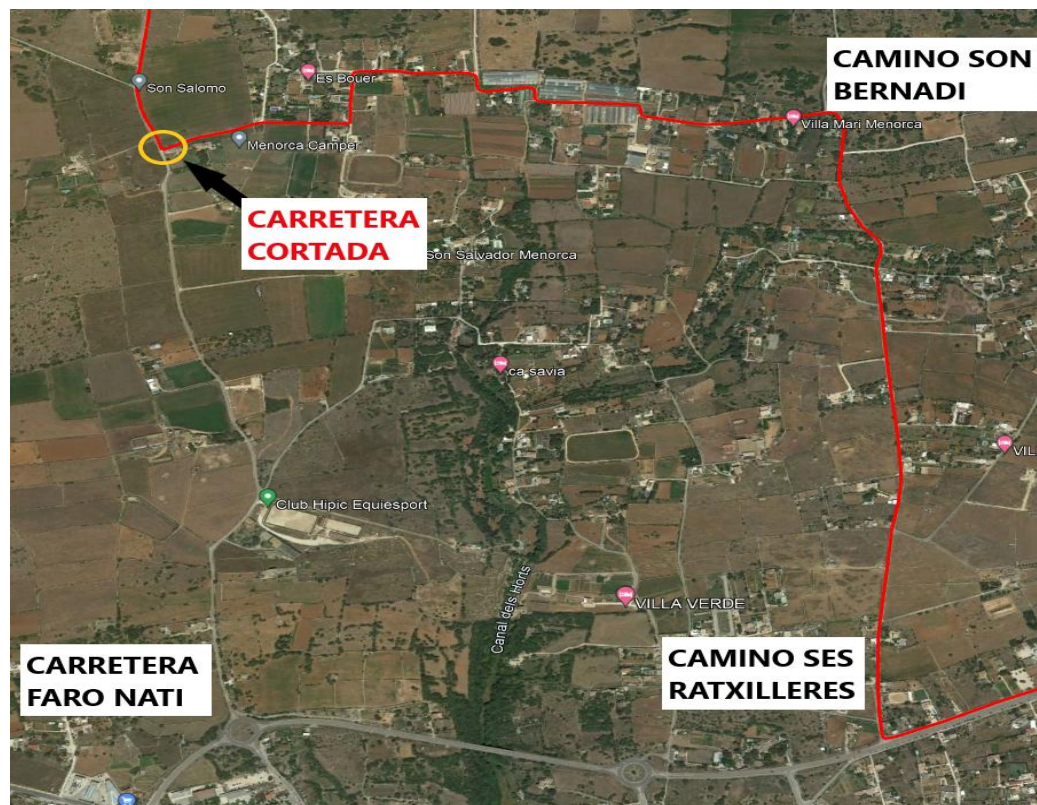
REFRESHMENT POINTS

- The organization will make available to all participants several refreshment points along the route with water, isotonic, food and fruit, as well as other products provided by the organization.
- Each runner must bring their own glass, since to minimize the environmental impact, no glasses will be served at the refreshment posts.
- It is strictly forbidden to receive external assistance or supplies during the race outside the points provided by the Organization. During the course of the race, participants must always listen to the members of the race organization. Failure to comply with this point will result in immediate disqualification.



ATTENTION!!

In the refreshment point of Faro Nati, access to the public will be restricted to prevent a clogging of the runners. The area will be for the exclusive use of participants and neighbors.





ENVIRONMENTAL RULES

- In these areas, it is NOT PERMITTED:
- Use any type of sonorous element that can produce strident noises.
- Leave the marked route.
- Shout or emit loud sounds or noises.
- It is forbidden to throw containers, wrappers and any kind of garbage or debris. Each participant must mark their gels, bars... with their bib number. If a wrapper is found, the runner may be penalized.
- Access to the start with a vehicle other than the bus in Cavallería and La Vall.
- The use of walking sticks will be allowed only with the use of rubber tips or caps on the tips.





ENVIRONMENTAL RULES: Participation in the race implies knowledge and acceptance of these special rules for the environment.

The race runs through sections that are catalogued as **RED NATURA 2000** that are home to sensitive and vulnerable flora and fauna and in which participants must act with care and responsibility.

These spaces will be properly identified with a sign: Fragile Natural Zone. And they are:

Dune system of Cavalleria and Cala Mica.

Dune system of Binimel-là - Cala Pregonda

Dune system of Cala Pilar

Wooded area between the macar Alfurinet and Cala Ses Fontanelles.

Section between Ses Ancòlles and the airfield of Son Angladó (Cala Morell).





Information sign not to leave the marked path.



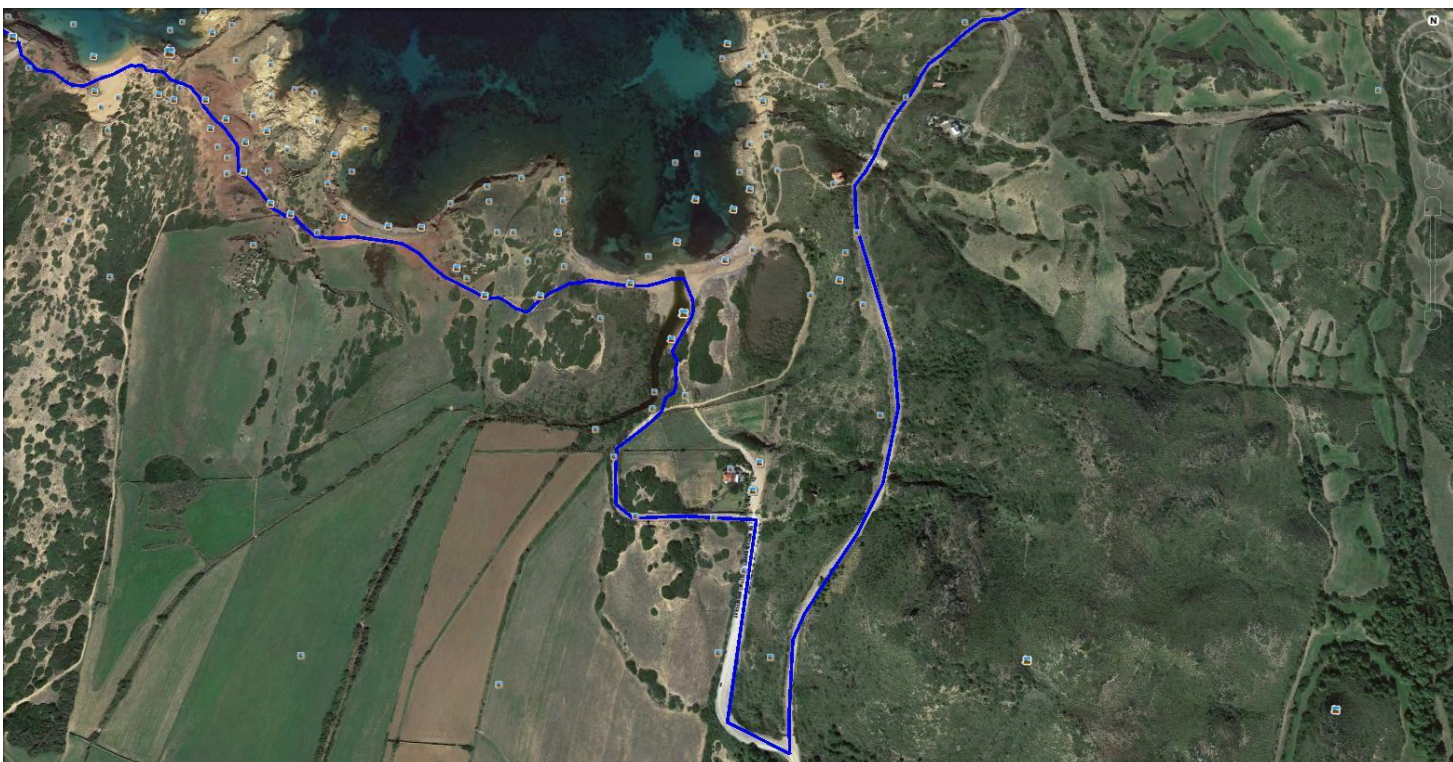
Information sign not to leave the marked path.



Information sign at the beginning of the Natura 2000 area.



Fragile zone of silence information sign, placed in Natura 2000 areas and the South parking area of La Vall.



Clear example of the Binimel-là area, where we deviated the route of the camí de cavalls race to protect this area according to the map.



SANCTIONS

IMPORTANT !!!

The Trail dels Fars runner must wear the bib provided by the Organization at all times, in a visible place on the front, and may not be cut, folded or modified. FAILURE TO COMPLY WITH THIS POINT, WILL REQUIRE AN IMMEDIATE SANCTION TO THE RUNNER.

Running at any time accompanied by a person without a bib will result in IMMEDIATE DISQUALIFICATION.





SANCTIONS

- Leaving the track to close the gap:
 - **First penalty:** 15 minutes
 - **Second penalty:** 30 minutes
 - **Third penalty:** Disqualification

- Throwing any kind of garbage, finding remains with the bib number or not having the bib number written on the wrappers of bars and gels.
 - **First penalty:** 30 minutes
 - **Second penalty:** 1 hour
 - **Third penalty:** Disqualification



ZONA DE META

- The finish line will be located in the vicinity of the [Piscina Municipal de Ciutadella](#).
- The refreshments will be in line, maintaining a single direction of departure.
- Post-finish. There will be delivery of products and refreshments provided by the collaborators of the race.
- Showers will be available at the municipal pavilion of Ciutadella.
- The awards ceremony will be held once the categories have been completed.
- IMPORTANT: The results of the race can only be consulted through the APP ELITECHIP or the web: www.elitechip.net





ENJOY THE RACE

SEE YOU IN THE FINISH LINE!

illadelstrails.com

